

Integration at Its Finest: Case Study of 3 Federal High Performing Buildings

RENEE CHENG

University of Minnesota

CARRIE DOSSICK

University of Washington

Three General Services Administration (GSA) high performing buildings recently won AIA COTE Top Ten Awards, achieving design excellence, implementing innovative energy systems while at the same time meeting stringent Federal guidelines. This case study research highlighted the team practices that supported collaborative decision-making and effective leadership. All three buildings achieved a high level of technical sophistication, using systems not commonly seen such as geothermal piles, radiant cooled ceilings, phase-change salts and a historic-preservation-compatible solar array. The decision-making process used to develop these unusual applications reveals the importance of investment in partnering, framing of common goals and the development of “swift trust”.

Through interviews and surveys, the researchers produced an interactive report that enables the reader to compare and contrast among projects, or to follow along one project narrative. Connections to the literature review are managed through hyperlinks, showing how peer reviewed research connects with these particular case studies.

Academic research into the professional practice of architecture is primarily authored by construction management faculty, sometimes with business or organizational expertise. This research team of architects and construction management faculty focused on design ideas, building technology and construction

processes. Using a holistic approach, they explain stories about building design and construction and recommend best practices for integrated teams.

INTEGRATION AT ITS FINEST: CASE STUDIES OF 3 HIGH PERFORMING FEDERAL BUILDINGS

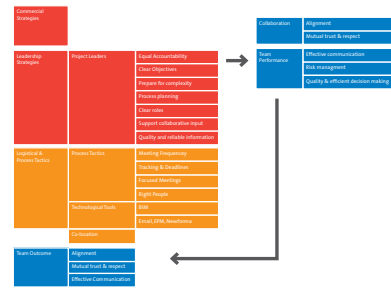
PRINCIPAL INVESTIGATOR: RENÉE CHENG, AIA, SCHOOL OF ARCHITECTURE, UNIVERSITY OF MINNESOTA
 CARRIE STURTS DOSSICK, PHD, PE, DEPARTMENT OF CONSTRUCTION MANAGEMENT, UNIVERSITY OF WASHINGTON

Three GSA high performing buildings recently won AIA COTE Top Ten Awards, achieving design excellence, implementing innovative energy systems while at the same time meeting stringent Federal guidelines. This case study research highlighted the team practices that supported collaborative decision-making and effective leadership. All three buildings achieved a high level of technical sophistication, using systems not commonly seen such as geothermal piles, radiant cooled ceilings, phase-change salts and a historic-preservation-compatible solar array. The decision-making process used to develop these unusual applications reveals the importance of investment in partnering, framing of common goals and the development of "swift trust".

Through interviews and surveys, the researchers produced an interactive report that enables the reader to compare and contrast among projects, or to follow along one project narrative. Connections to the literature review are managed through hyperlinks, showing how peer reviewed research connects with these particular case studies.

Academic research into the professional practice of architecture is primarily authored by construction management faculty, sometimes with business or organizational expertise. This research team of architects and construction management faculty focused on design ideas, building technology and construction processes. Using a holistic approach, they explain stories about building design and construction and recommend best practices for integrated teams.

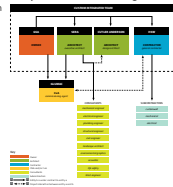
KEY INGREDIENTS AND OUTCOMES



Wayne N. Aspinall Federal Building & U.S. Courthouse design-build team with integrated firms



Edith Green - Wendell Wyatt Federal Building custom-integrated team



Federal Center South Building 1202 design-build team



Excerpts from the interactive PDF show that a viewer can navigate to compare and contrast all three projects on one topic such as the RFP (Request for Proposals) process or navigate to see a linear narrative of one project

Executive Summary	Overview	High Performance	Commercial Strategies	Leadership Strategies	High Risk & Project/Team	Building Outcomes
Research Methodology Literature Review	Project Overview Project Objectives Energy Performance Design Goals Major Goals/Outcomes	Energy Performance Design Goals Major Goals/Outcomes	Energy Performance Design Goals Major Goals/Outcomes	Project Overview Project Objectives Energy Performance Design Goals Major Goals/Outcomes	Project Overview Project Objectives Energy Performance Design Goals Major Goals/Outcomes	Project Overview Project Objectives Energy Performance Design Goals Major Goals/Outcomes
COMPARATIVE ANALYSIS						
COMPARISON & BEST PRACTICES						
WAYNE N. ASPINALL FEDERAL BUILDING & U.S. COURTHOUSE						
EDITH GREEN - WENDELL WYATT FEDERAL BUILDING						
FEDERAL CENTER SOUTH BUILDING 1202						

Executive Summary	Overview	High Performance	Commercial Strategies	Leadership Strategies	High Risk & Project/Team	Building Outcomes
Research Methodology Literature Review	Project Overview Project Objectives Energy Performance Design Goals Major Goals/Outcomes	Energy Performance Design Goals Major Goals/Outcomes	Energy Performance Design Goals Major Goals/Outcomes	Project Overview Project Objectives Energy Performance Design Goals Major Goals/Outcomes	Project Overview Project Objectives Energy Performance Design Goals Major Goals/Outcomes	Project Overview Project Objectives Energy Performance Design Goals Major Goals/Outcomes
COMPARATIVE ANALYSIS						
COMPARISON & BEST PRACTICES						
WAYNE N. ASPINALL FEDERAL BUILDING & U.S. COURTHOUSE						
EDITH GREEN - WENDELL WYATT FEDERAL BUILDING						
FEDERAL CENTER SOUTH BUILDING 1202						